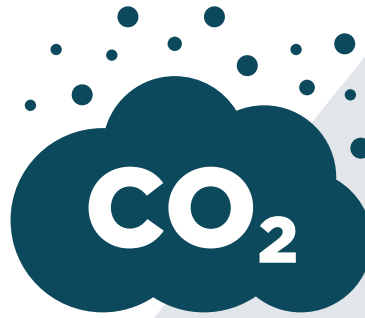
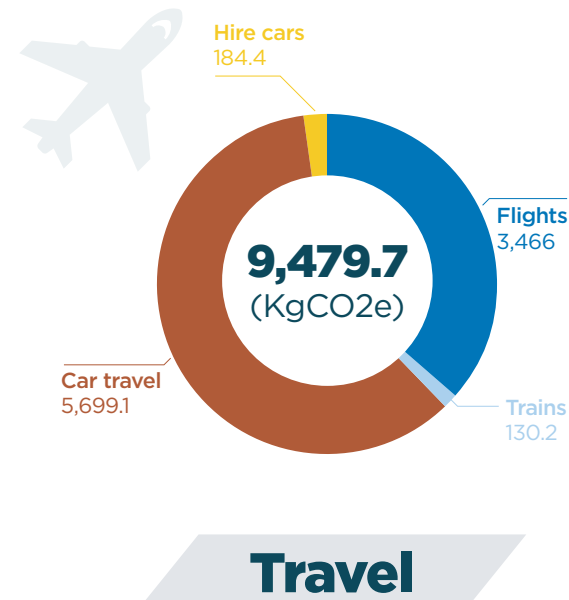
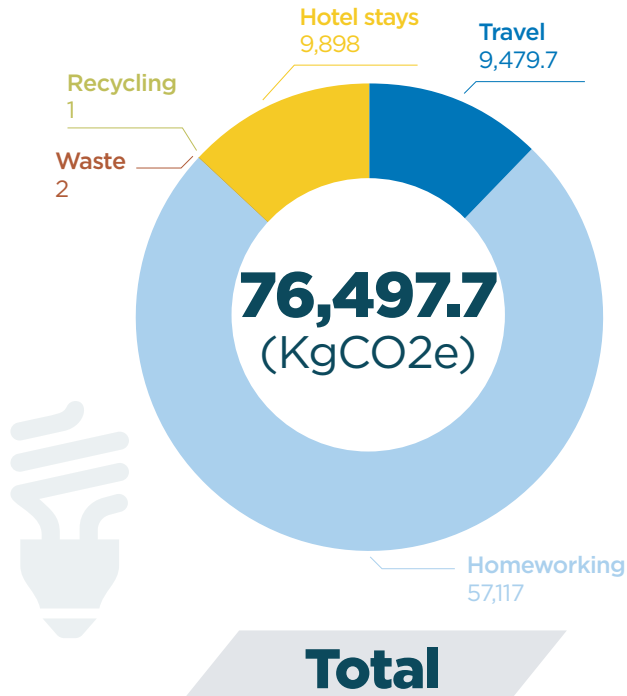


# 2019/2020



# 76,497.7 KG CO2E

## TOTAL BUSINESS CARBON EMISSIONS



### SCOPE 1 EMISSIONS

1,839.7 kg CO2e

### SCOPE 2 EMISSIONS

0 kg CO2e

### SCOPE 3 EMISSIONS

74,658 kg CO2e

#### NOTES...

- All calculations are based on actual data, where possible. Where actual data is not available, we have used recognised calculation factors, as provided by The Carbon Neutral Protocol via Natural Capital Partners, and the UK Government GHG Conversion Factors for Company Reporting, as provided by the Department for Business, Energy and Industrial Strategy and the Department for Environment, Food and Rural Affairs.
- For more information about our Climate Pledge, visit [www.reverberate-pr.co.uk/sustainability](http://www.reverberate-pr.co.uk/sustainability)